

EuroDist System

ASTM-D5236
Potstill

ROFA

Deutschland GmbH

EURO
SYSTEM
IST
Laboratory &
Prozess Analyzers





Automatic vacuum distillation plants according to ASTM D5236, available in sizes from 5.5 to 50 litre.

Distillation line can be operated between -20°C and 150°C by internal thermostat.

Additional infrared heaters keep distillate liquid inside receiver bottle.

Unique design of autosampler allows to take off receiver bottles right after cut.

Autosampler includes automatic weighing scale, volume follower device and bottle sealing mechanics.

Conveyor belt contains 20 x 1 litre bottles or 28 x 500 ml bottles.

Bottles can be exchanged at any time.

Framework includes front doors, quick connectors for water, air and nitrogen supply.

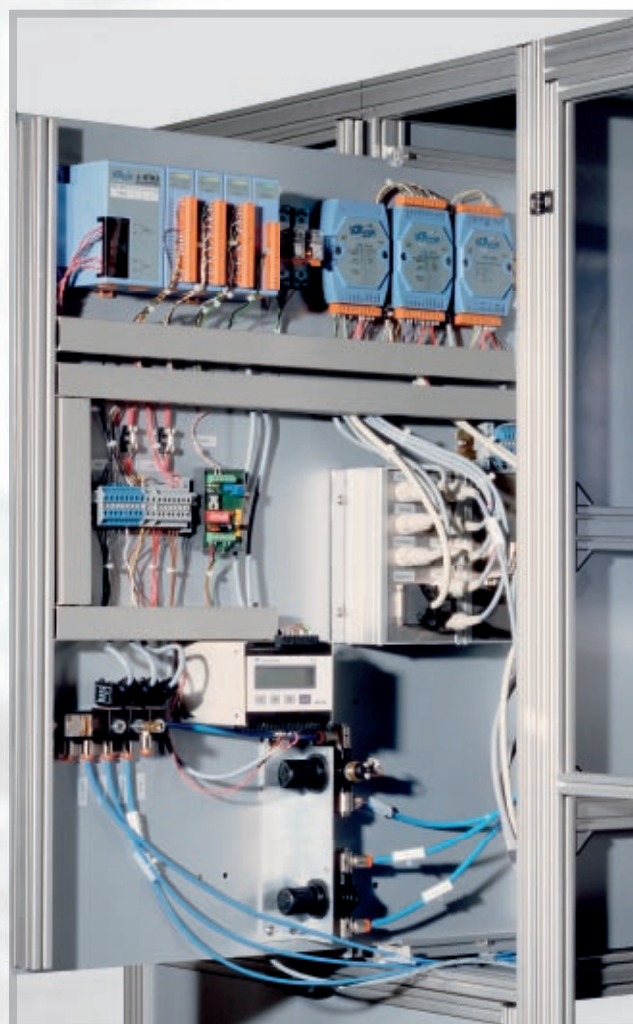
Plant can be connected to laboratory ventilation lines.





Compact network control system exist of power box with automatic, resettable fuses, earth leakage circuit breaker and control board with easy exchangeable modules.

All devices can be pulled out of frame for easy service.



Options

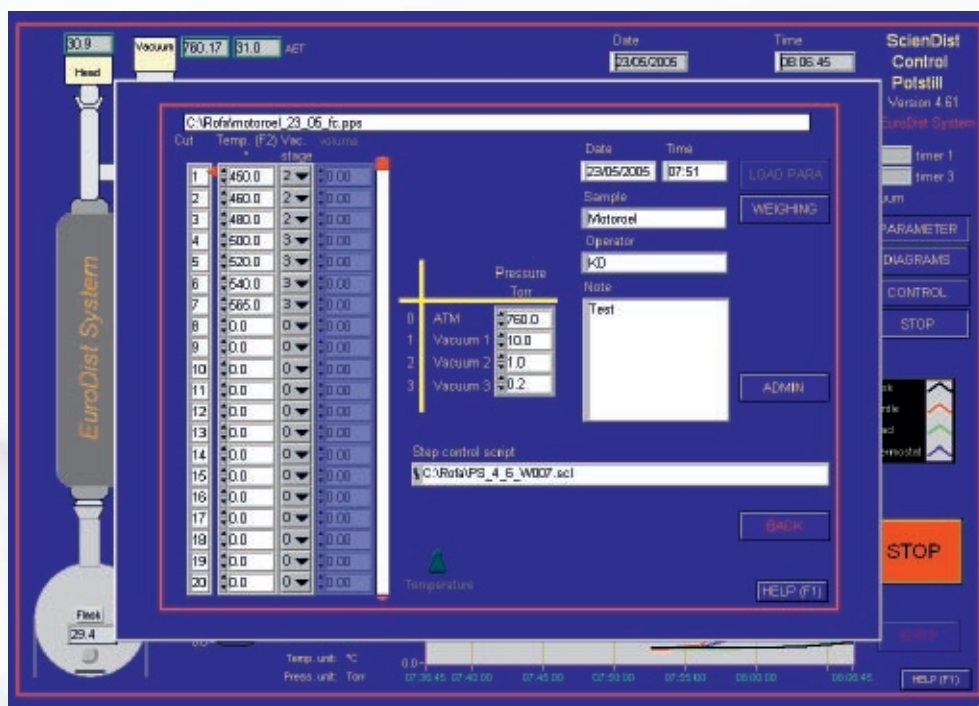
- Infrared flask heater
- Fire extinguishing system
- External cooling for coldtrap



EuroDist-Control

EuroDist Control software runs on all Microsoft Windows operation systems. Windows XP professional is installed on all plants..

- easy to handle, compact design
- data recorder records all process data in second intervals
- PEED controllers for all heaters
- 2 stage vacuum controller with ramp evacuation
- password protected service and calibration area
- software based PL system
- permanent system diagnostic detects faulty sensors
- redundant safety control supervises process and handles shutdown conditions automatic
- available in English, German
French, Italian, Russian (other languages on request)



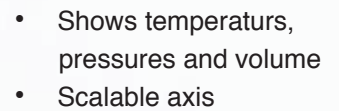
- up to 60 cuts
- 5 stage distillation
- cut at temperature or volume
- auto detection of distillationend and fault condition

All parameters are stored in one file with unique name.
Parameters can be changed at any time, including cuts and pressures.
Cut weights are taken and calculated automatically.

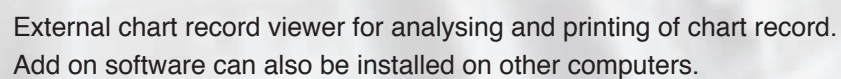
- unattended distillation including automatic vacuum reduction
- automatic IBP detection



All distillation parameters are on one single page.
Distillation can be controlled by delta T or ml/min rate.
Software detects empty flask, over temperatures and cracking

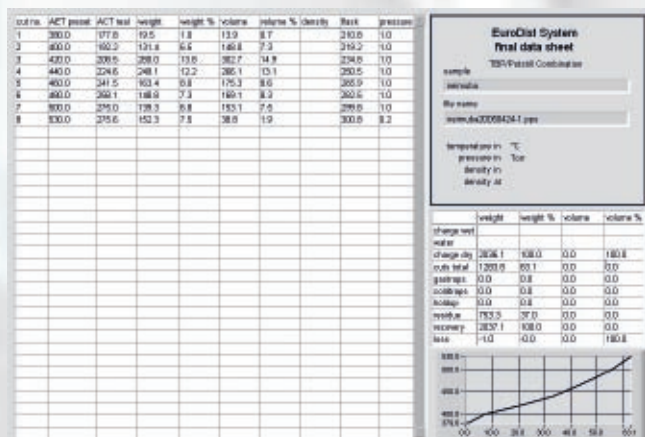


- shows all sensors
- select sensors for to display
- scalable axis
- select and print cer
tain

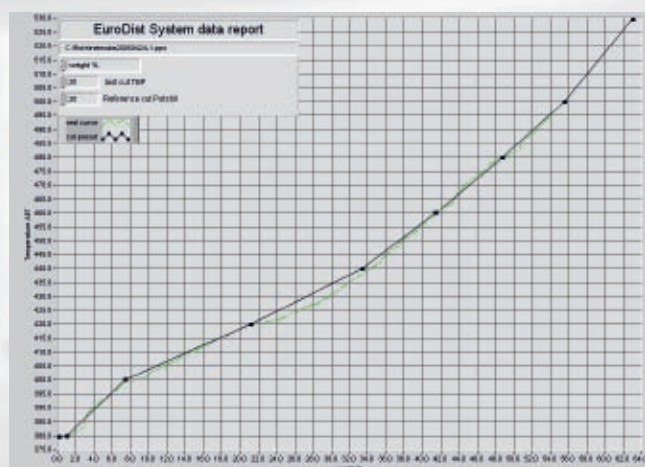




Automatic generation of distillation reports.
Report software can also be installed on other computers.

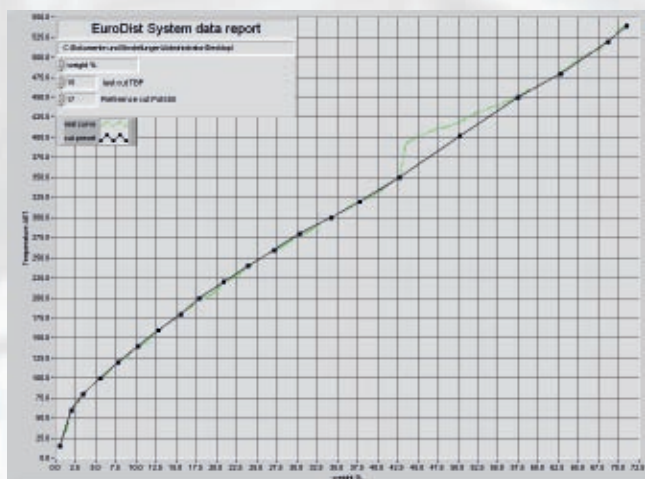


Software generates table, table/curve and curve. Interrupted distillations can be merged to a single distillation report.



Curves can be shown as temperature (ABET) versus:

- mass % (weigh)
- volume % (by internal volume follower data)
- volume % (by manual cut density input)



TBP (ATM D 2893) and Potstill (ATM D 5236) distillations can be merged to one single distillation report.
Selected yields from Potstill distillation can be corrected automatically.

Technical Data

Max. temperature flask	°C	400
Max. temperature AET	°C	600
Minimum operation pressure	Torr	0,1
Receiver size	ml	500 or 1000
Max receivers on Conveyor Belt		20
Max. cuts		99
Utility requirements		
Electrical (3P+N+PE)	V	400
	Hz	50
	A	16
Compressed air	bar	6 (dry, not oiled, particle filter)
Nitrogen	bar	2 (dry, technical quality)
Water	bar	4 (particle filter)
Ambient conditions		
Temperature	°C	10 - 35
Rel. Humidity	%	80
Dimensions		
Width	mm	1600
Depth	mm	700
Height	mm	2100

ROFA
Deutschland GmbH

EURO
SYSTEM
IST
Laboratory &
Prozess Analyzers

ROFA Deutschland GmbH
EuroDist System

Gutenbergstraße 6 a
D 53359 Rheinbach

Tel.: +(49)2226 / 16 90 -63/ -64

Fax: +(49)2226/ 16 90 -65

office@rofa-germany.de

www.rofa.at